

# Proximal Femur Intra-medullary Antirotational Nail

## Product Information

### Nail

REF. NO. φ16.5mm	REF. NO. φ17.0mm	Product Description	Specification
070310170	071810170	PFN, Antirotation	φ9.0x170mm
070310200	071810200	PFN, Antirotation	φ9.0x200mm
070310240	071810240	PFN, Antirotation	φ9.0x240mm
070320170	071820170	PFN, Antirotation	φ10.0x170mm
070320200	071820200	PFN, Antirotation	φ10.0x200mm
070320240	071820240	PFN, Antirotation	φ10.0x240mm
070330170	071830170	PFN, Antirotation	φ11.0x170mm
070330200	071830200	PFN, Antirotation	φ11.0x200mm
070330240	071830240	PFN, Antirotation	φ11.0x240mm
070880170	071840170	PFN, Antirotation	φ12.0x170mm
070880200	071840200	PFN, Antirotation	φ12.0x200mm
070880240	071840240	PFN, Antirotation	φ12.0x240mm
070341300	071851300	PFN, Antirotation, Long, Left	φ9.0x300mm
070341340	071851340	PFN, Antirotation, Long, Left	φ9.0x340mm
070341380	071851380	PFN, Antirotation, Long, Left	φ9.0x380mm
070341420	071851420	PFN, Antirotation, Long, Left	φ9.0x420mm
070342300	071852300	PFN, Antirotation, Long, Right	φ9.0x300mm
070342340	071852340	PFN, Antirotation, Long, Right	φ9.0x340mm
070342380	071852380	PFN, Antirotation, Long, Right	φ9.0x380mm
070342420	071852420	PFN, Antirotation, Long, Right	φ9.0x420mm
070351300	071861300	PFN, Antirotation, Long, Left	φ10.0x300mm
070351340	071861340	PFN, Antirotation, Long, Left	φ10.0x340mm
070351380	071861380	PFN, Antirotation, Long, Left	φ10.0x380mm
070351420	071861420	PFN, Antirotation, Long, Left	φ10.0x420mm
070352300	071862300	PFN, Antirotation, Long, Right	φ10.0x300mm
070352340	071862340	PFN, Antirotation, Long, Right	φ10.0x340mm
070352380	071862380	PFN, Antirotation, Long, Right	φ10.0x380mm
070352420	071862420	PFN, Antirotation, Long, Right	φ10.0x420mm
070361300	071871300	PFN, Antirotation, Long, Left	φ11.0x300mm
070361340	071871340	PFN, Antirotation, Long, Left	φ11.0x340mm
070361380	071871380	PFN, Antirotation, Long, Left	φ11.0x380mm
070361420	071871420	PFN, Antirotation, Long, Left	φ11.0x420mm
070362300	071872300	PFN, Antirotation, Long, Right	φ11.0x300mm
070362340	071872340	PFN, Antirotation, Long, Right	φ11.0x340mm
070362380	071872380	PFN, Antirotation, Long, Right	φ11.0x380mm
070362420	071872420	PFN, Antirotation, Long, Right	φ11.0x420mm
	071881300	PFN, Antirotation, Long, Left	φ12.0x300mm
	071881340	PFN, Antirotation, Long, Left	φ12.0x340mm
	071881380	PFN, Antirotation, Long, Left	φ12.0x380mm
	071881420	PFN, Antirotation, Long, Left	φ12.0x420mm
	071882300	PFN, Antirotation, Long, Right	φ12.0x300mm
	071882340	PFN, Antirotation, Long, Right	φ12.0x340mm
	071882380	PFN, Antirotation, Long, Right	φ12.0x380mm
	071882420	PFN, Antirotation, Long, Right	φ12.0x420mm

## Proximal Femur Intra-medullary Antirotational Nail



990120003

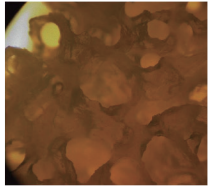
Remark: Nail provided in the proximal end with two diameters, 16.5mm and 17.0mm

### Others

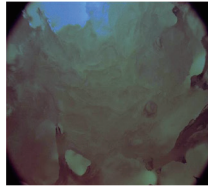
REF. NO.	Product Description	Length(mm)
070370075-070370120	Spiral Blade	75-120 (5mm increments)
070120025-070120085	4.9mm Locking Screw	25-85 (5mm increments)
070420000	End Cap	
070421000	End Cap, Long	

# Proximal Femur Intra-medullary Antirotational Nail

Compacts the cancellous bone instead of drilling – which is better for osteoporotic patients.



Bone structure before blade insertion



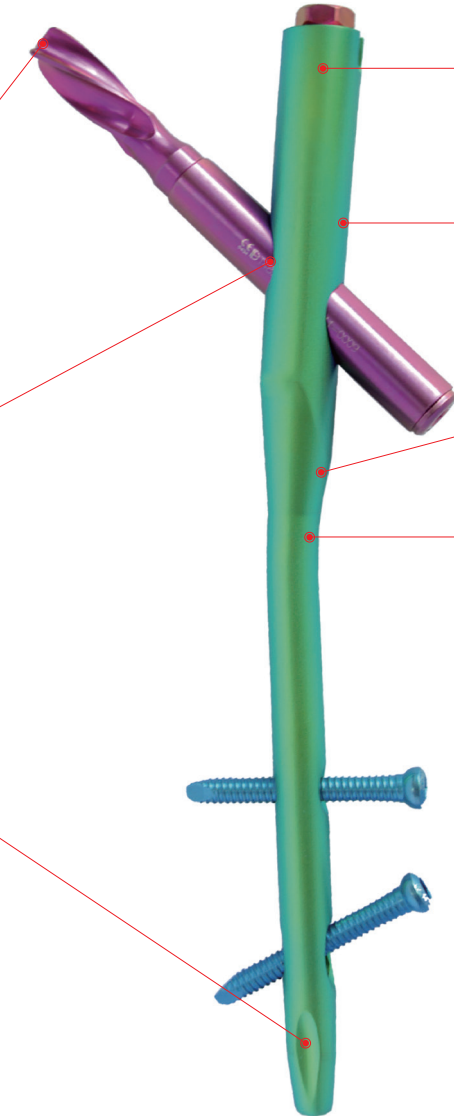
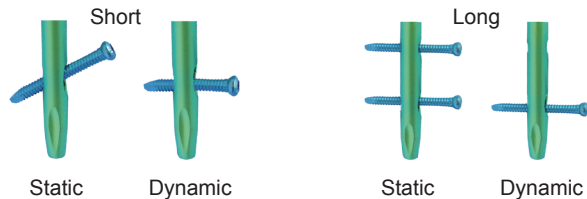
Bone structure after blade insertion

Increased blade-bone interface provides better stability in anchoring and antirotation.

Lemon shaft design provides antirotation mechanism at the blade-nail junction.

Distal fluted treating makes the insertion more easier and reduces the stress on the bone at the tip of the nail.

Provide static and dynamic distal locking options for clinical choice.



Proximal diameter of 17.0mm provides enough strength in fixation. 16.5mm diameter also available for small stature patients.

Lateral flat cut design for easier insertion and lower pressure on the lateral cortex.

Lateral-medial 6 degree of bend makes the entry point at the tip of the greater trochanter.

Higher bending point leaves the distal nail more centralization in the femoral medullary canal.

## Indications & Contraindications

Proximal Femur, Intra-medullary Antirotational Nail

### Short (170mm – 240mm)

Indications

- Pertrochanteric fractures
- Intertrochanteric fractures
- High subtrochanteric fractures

Contraindications

- Low subtrochanteric fractures
- Femoral shaft fractures
- Isolated or combined medial femoral neck fractures

### Long (300mm – 420mm)

Indications

- Low and extended subtrochanteric fractures
- Ipsilateral trochanteric fractures
- Combination fractures (in the proximal femur)
- Pathological fractures

Contraindications

- Isolated femoral shaft fractures
- Isolated or combined medial femoral neck fractures



4.9mm Locking Screw

## Warning

This flyer is just for understanding the specific product features. For clinical usage, please refer to the surgical guide. Instruction by experienced surgeon is highly recommended.